



**matizol**  
PROOFED BY EXPERIENCE



# LIQUID WATERPROOFING



**EASY AND FAST  
APPLICATION**



**SEAMLESS  
COATINGS**



**WITHOUT PRIMING**





 **matizol**®

Discover modern waterproofing technologies that are revolutionizing the waterproofing of roofs, balconies, terraces and foundations. Matizol presents a series of seamless liquid solutions based on water-based polymers, ensuring durability, protection and safety.

Matizol is a guarantee of quality and partnership. We have been present on the waterproofing market in Europe for over 120 years, and since 2010 we have been part of the Polish, international Selena Group.

## APPLICATION CATEGORIES



### FLAT ROOFS

Matizol ELITE TECH  
Matizol FIBER ROOF

6  
8  
12



### DETAILS WATERPROOFING

Matizol ELITE TIXO  
Matizol MAT PP 90G /M<sup>2</sup>  
Matizol CORNER TAPE PP-BUTYL  
Matizol COLLAR PP-BUTYL  
Matizol JOINT TAPE PV-ELAST

16  
18  
19  
19  
19



### TERRACES AND BALCONIES

Matizol ELITE DECK  
Matizol TRANS DECK  
Matizol COLOR DECK

20  
22  
26  
30



### SLOPE ROOFS

Matizol COLOR ROOF

34  
36



### FOUNDATIONS

Matizol EVOMER 1K RESIST  
Matizol EVOMER 2K  
Matizol EVOMER 1K

38  
40  
42  
44



### ROOFS AND FOUNDATIONS

Matizol EVOMER FAST COATING  
Matizol EVOMER FAST PRIMER  
Matizol EVOMER FAST FIX

46  
47  
47  
47

## WHY LIQUID SOLUTIONS BY MATIZOL?



### INNOVATIVE POLYMER SOLUTIONS:

Our products use water-based polymers, providing not only tight, seamless waterproofing, but also safety for the contractor and the environment.



### RESILIENCE:

Thanks to the use of the latest technological achievements, Matizol products provide exceptional resistance to weather conditions, changing temperatures and mechanical loads.



### EASE AND SPEED OF APPLICATION:

Our solutions do not require primers and additional protective layers against UV radiation. They are ready to use and can be applied using simple tools such as a roller, brush or spray.



### COMPLETE SOLUTIONS:

Our series of products allow a comprehensive execution of waterproofing. In addition to coatings, the offer includes dedicated tapes for joints and flashings as well as reinforcing non-woven fabrics.





# FLAT ROOF

## MATIZOL ELITE TECH SYSTEM

FOR USE IN DIFFICULT CONDITIONS AND WITH HIGHEST RESISTANCE TO MOVEMENT.



APPLICATION  
FROM 0°C TO +45°C



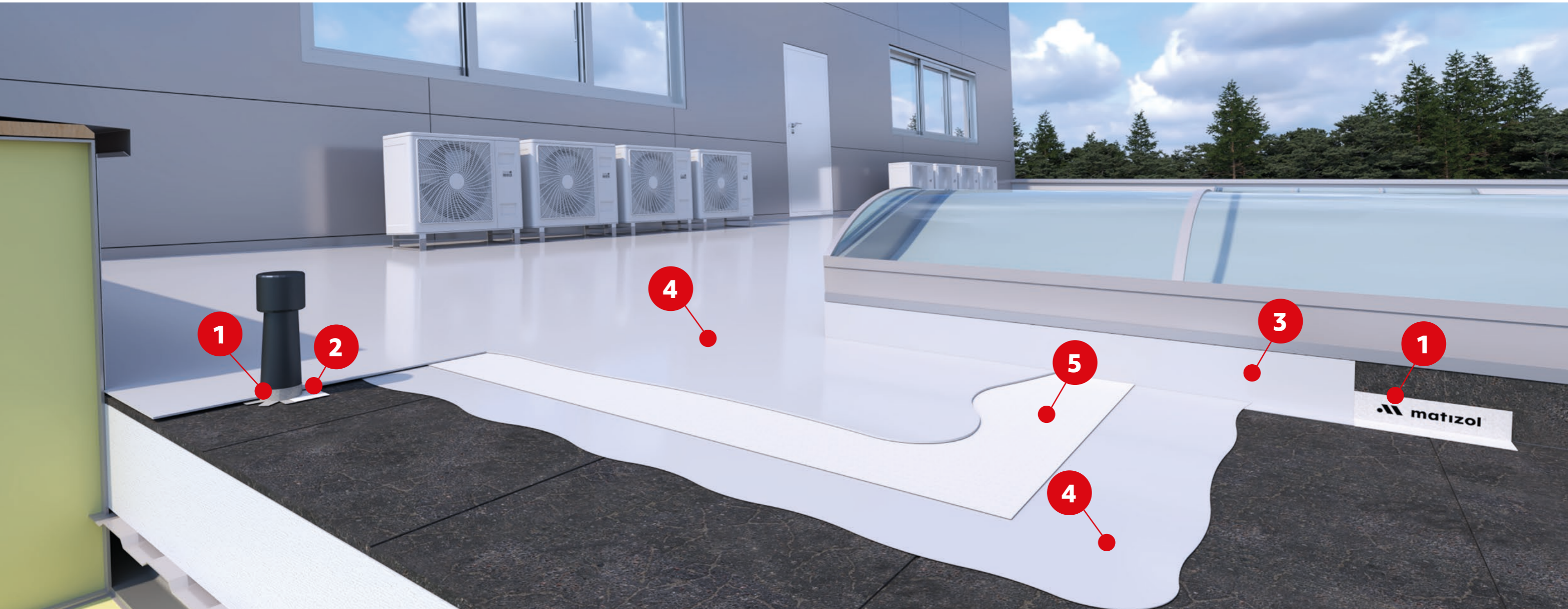
APPLICATION  
ON WET SURFACE



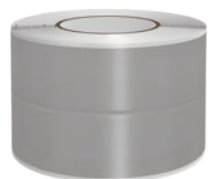
HIGH RESISTANCE  
TO TEAR & WEAR

### RECOMMENDED UNDER CONDITIONS:

- Application temperature between: 0°C to +45°C
- Damp substrate or moisture under existing waterproofing
- Unseasoned concrete
- High and frequent pedestrian and/or vehicular traffic
- Risk of water stagnation



**1** MATIZOL CORNER  
PP-BUTYL TAPE



**2** MATIZOL COLLAR  
PP-BUTYL



**3** MATIZOL  
ELITE TIXO



**4** MATIZOL  
ELITE TECH



**5** MATIZOL MAT  
PP 90G /M<sup>2</sup>



## MATIZOL ELITE TECH

LIQUID ROOF MEMBRANE FOR USE IN DIFFICULT CONDITIONS



DURABILITY



APPLICATION FROM 0°C TO +45°C



APPLICATION ON WET SUBSTRATE

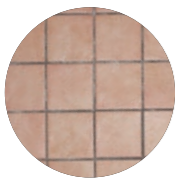


HIGH RESISTANCE TO TEAR & WEAR

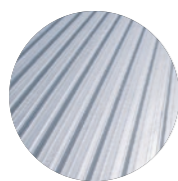
### DESCRIPTION:

Hybrid waterproof membrane for roofs, terraces and balconies, with high durability, designed for intensive use (P4). Thanks to the unique combination of resins, the coating can be applied at temperatures from 0°C to +45°C, on wet substrates, without the use of a primer, and has the ability to release moisture trapped in the substrate (SD1).

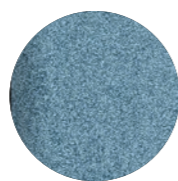
### SUBSTRATES:



Stoneware and ceramics



Metal

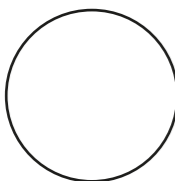


Bitumen felt

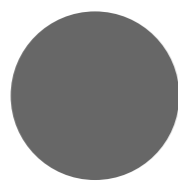


Concrete

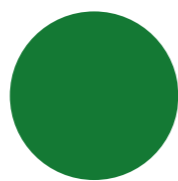
### AVAILABLE COLOURS:



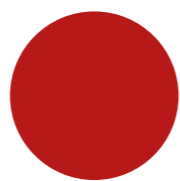
White



Gray



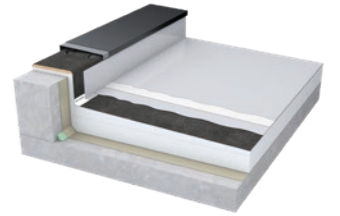
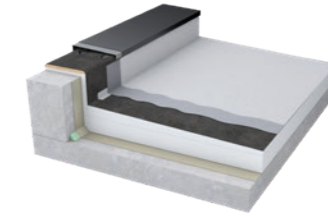
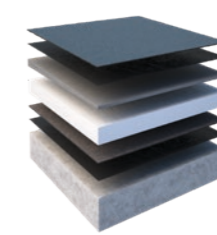
Green



Red

## ROOF RENOVATION METHODS COMPARISON

AREA OF 100 M<sup>2</sup> FINISHED WITH BITUMEN FELT



	BITUMEN FELT - 2 LAYERS	POLYUREA	MATIZOL ELITE TECH
NUMBER OF APPLICATION STEPS	<b>5 STEPS</b> [DETAILS, PRIMER, VENTILATED BITUMEN FELT, CHIMNEYS, TOP LAYER BITUMEN FELT]	<b>2 STEPS</b> [PRIMER, 1 LAYER]	<b>4 STEPS</b> [DETAILS, 1 LAYER, REINFORCEMENT, 2nd LAYER]
AMOUNT OF PRODUCTS IN THE SYSTEM	<b>5 PRODUCTS</b> [FLASHING, PRIMER, ventilated bitumen felt, chimneys, top layer bitumen felt]	<b>2 PRODUCTS</b> [PRIMER, COATING]	<b>4 PRODUCTS</b> [TAPES, COATING, TIXO COATING, NONWOVEN FABRIC]
APPLICATION DIFFICULTY	<b>HARD</b> [NEEDED SKILLS AND DEDICATED TOOLS]	<b>VERY HARD</b> [EXPENSIVE AND SPECIALIZED TOOLS, ADVANCED SKILL]	<b>EASY</b> BASIC SKILLS AND TOOLS
NEED TO REMOVE MOISTURE	<b>YES</b> VENTILATION CHIMNEYS + VENTILATION MEMBRANE	<b>NO</b>	<b>NO</b>
TOTAL APPLICATION TIME (20°C, 100m <sup>2</sup> )	<b>2-3 DAYS</b> [DRYING & WORK TIME]	<b>2 DAYS</b> [DRYING & WORK TIME]	<b>2 DAYS</b> [DRYING & WORK TIME]
VAPOR PERMEABILITY	<b>NO</b>	<b>YES</b>	<b>YES</b>
RESILIENCE	<b>Up to 10 YEARS</b>	<b>Up to 15 YEARS</b>	<b>Up to 15 YEARS</b>

### TECHNICAL PARAMETERS

Consumption (two layers)	1.7 - 1.9 kg/m <sup>2</sup>
Application temperature	0°C - + 45°C
Temperature resistance	-30°C - + 80°C
Rain resistance [time]	20°C = 2h 0°C = 4h
Water vapor permeability	SD 1
Resistance to load and pedestrian traffic	P4

### LOGISTIC DATA

Package size	Quantity on the pallet
5 kg	120
10 kg	48
20 kg	36

## MATIZOL FIBER ROOF SYSTEM

FIBER-REINFORCED, SINGLE-LAYER RENOVATION SYSTEM



JUST  
1 LAYER



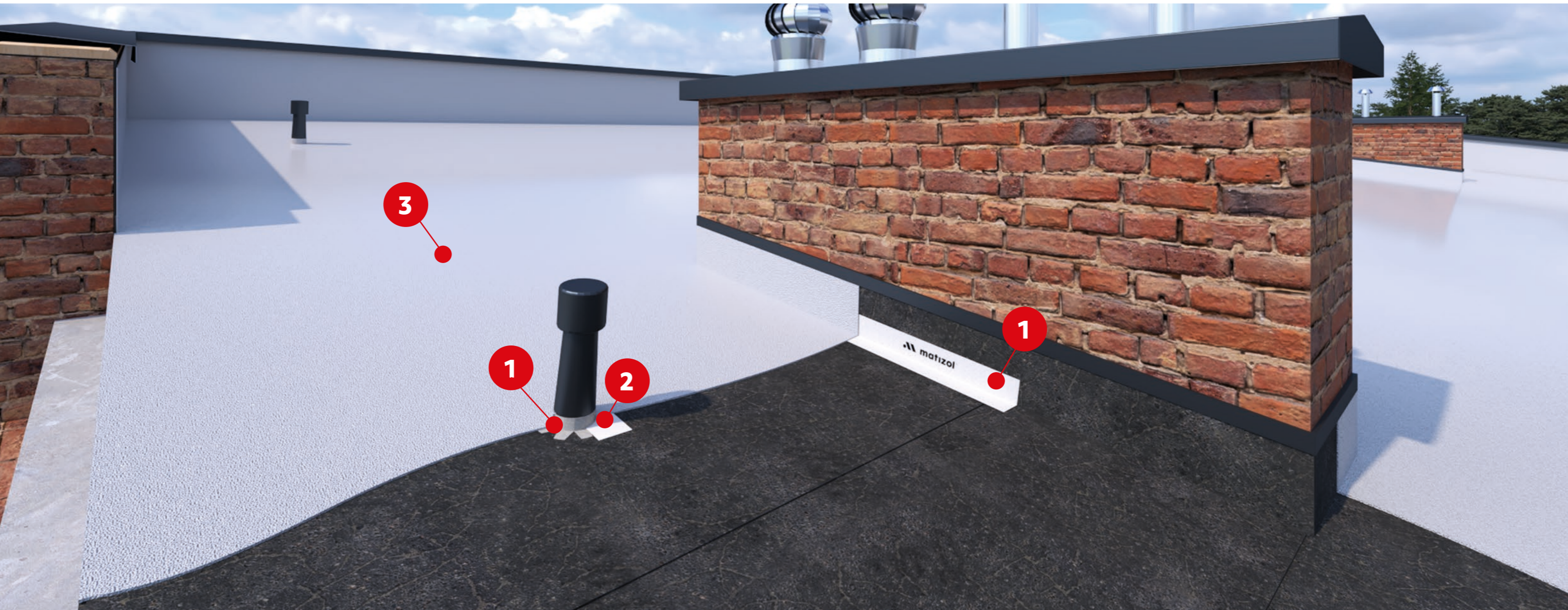
WATERPROOF



REINFORCED  
WITH FIBERS

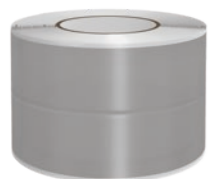
### RECOMMENDED UNDER CONDITIONS:

- Renovation of bitumen roofs
- Damaged bitumen felt roof covering
- Quick waterproofing without many steps
- Risk of water stagnation



1

MATIZOL CORNER  
PP-BUTYL TAPE



2

MATIZOL COLLAR  
PP-BUTYL



3

MATIZOL  
FIBER ROOF



## MATIZOL FIBER ROOF

FIBER-REINFORCED, RENOVATION COATING FOR DAMAGED ROOFS



DURABILITY



ONLY 1 LAYER



RESISTANT TO WATER STAGNATION



REINFORCED WITH FIBERS

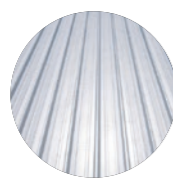
### DESCRIPTION:

Elastomeric, fiber-reinforced, liquid waterproof membrane intended for the renovation of flat roofs. Thanks to the addition of long fibers, it is especially recommended for damaged roofs with a risk of water stagnation. It can be applied in one layer, without the need for additional reinforcement with non-woven fabric.

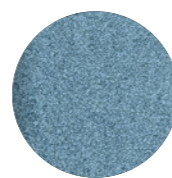
### SUBSTRATES:



Wood



Metal

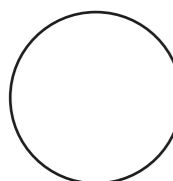


Bitumen felt

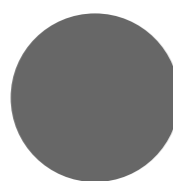


Concrete

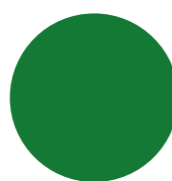
### AVAILABLE COLOURS:



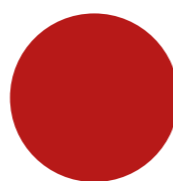
White



Grey



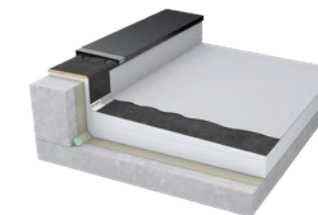
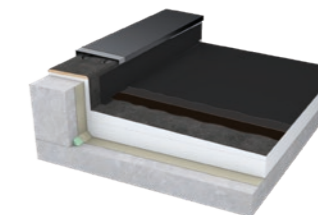
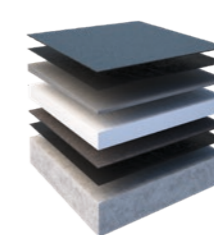
Green



Red

## ROOF RENOVATION METHODS COMPARISON

AREA OF 100 m<sup>2</sup> FINISHED WITH BITUMEN FELT



	1 LAYER OF BITUMEN FELT	BITUMEN LIQUIDS	MATIZOL FIBER ROOF
NUMBER OF APPLICATION STEPS	<b>3 STEPS</b> DETAILS, PRIMER, BITUMEN FELT	<b>5 STEPS</b> DETAILS, PRIMER, 1st LAYER, 2nd LAYER, UV PROTECTIVE LAYER	<b>2 STEPS</b> DETAILS, 1 LAYER
AMOUNT OF PRODUCTS IN THE SYSTEM	<b>3 PRODUCTS</b> FLASHING, PRIMER, BITUMEN FELT	<b>5 PRODUCTS</b> PRIMER, FILLER, COATING, UV PROTECTIVE LAYER, REINFORCEMENT	<b>2 PRODUCTS</b> TAPES, COATING
APPLICATION DIFFICULTY	<b>MEDIUM</b> ADVANCED SKILLS AND DEDICATED TOOLS	<b>MEDIUM</b> BASIC TOOLS, LARGE NUMBER OF STEPS	<b>EASY</b> BASIC SKILLS AND TOOLS
TOTAL APPLICATION TIME (20°C, 100m <sup>2</sup> )	<b>2 DAYS</b> DRYING & WORK TIME	<b>2-3 DAYS</b> DRYING & WORK TIME	<b>1 DAY</b> DRYING & WORK TIME
UV RESISTANCE	<b>YES</b>	<b>YES, WITH A EXTRA TOP LAYER</b>	<b>YES</b>
DURABILITY	<b>Up to 10 YEARS</b>	<b>5-7 YEARS</b>	<b>7 YEARS</b>

### TECHNICAL PARAMETERS

Consumption ( 2 layers)	0.8 kg/m <sup>2</sup> + 0.8 kg/m <sup>2</sup>
Consumption ( 1 layer)	1,6 kg/m <sup>2</sup>
Application temperature	+5°C - +35°C
Temperature resistance	-10°C - + 80°C
Dry to the touch	12h

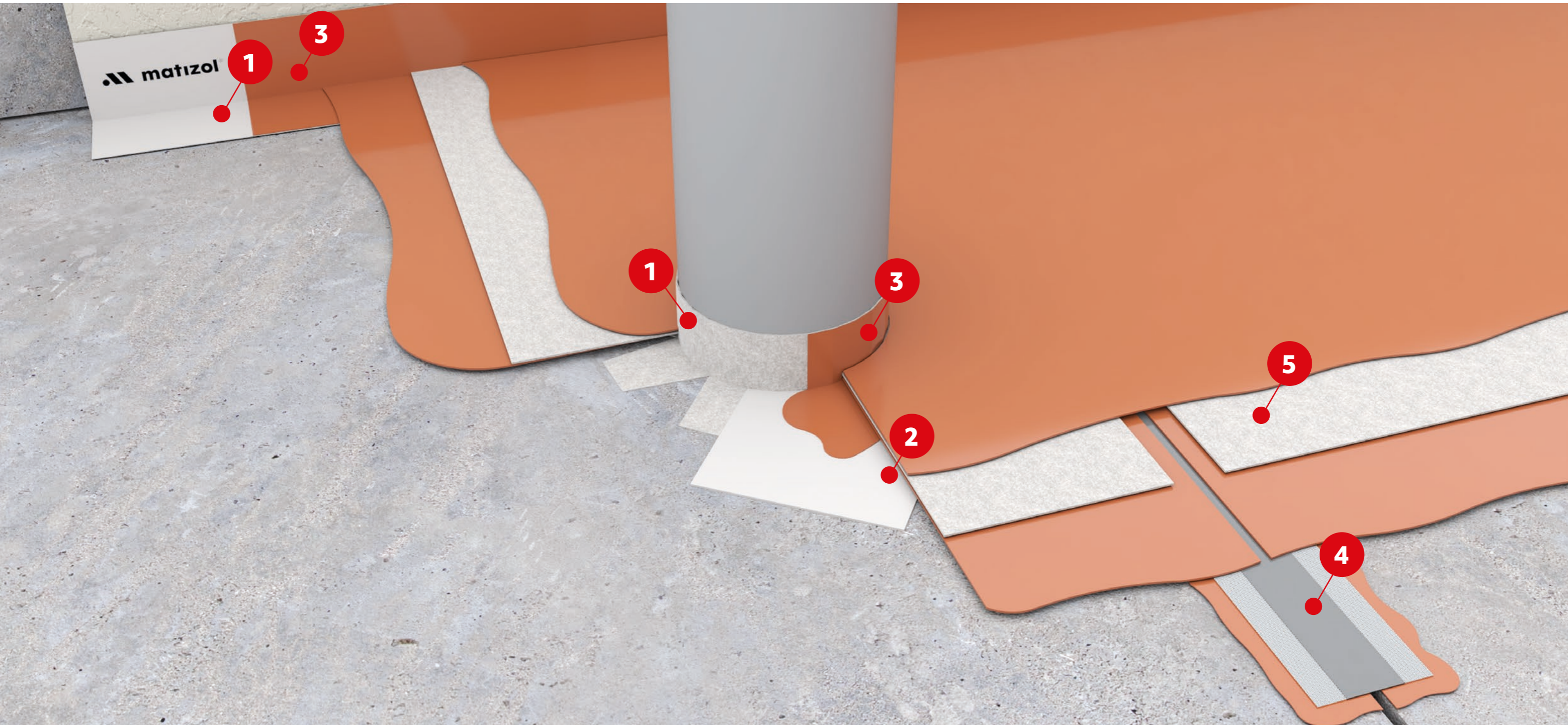
### LOGISTIC DATA

Package size	Quantity on the pallet
10 kg	48
20 kg	36

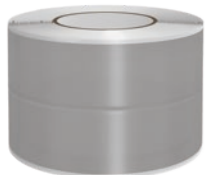


## FLASHINGS AND REINFORCEMENTS

### LIQUID WATERPROOFING



**1** MATIZOL CORNER  
PP-BUTYL TAPE



**2** MATIZOL COLLAR  
PP-BUTYL



**3** MATIZOL ELITE  
TIXO



**4** MATIZOL JOINT  
TAPE PV-ELAST



**5** MATIZOL MAT  
PP 90G /M<sup>2</sup>



**MATIZOL ELITE TIXO**

LIQUID MEMBRANE FOR ROOF FLASHINGS AND VERTICAL SURFACES



APPLICATION FROM 0°C TO + 45°C



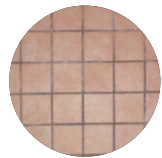
APPLICATION ON WET SUBSTRATE (SD1)



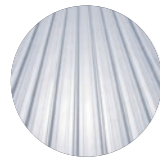
HIGH ADHESION TO VERTICAL SURFACES

**DESCRIPTION:**

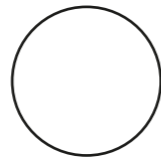
Thixotropic, hybrid, liquid roofing membrane for vertical surfaces and details. It is also suitable for levelling grouts (up to a depth of 1 mm) on tiled substrates before applying MATIZOL ELITE TECH. The membrane can be applied at temperatures from 0°C to +45°C, on wet substrates, without the use of a primer, and has the ability to remove moisture trapped in the substrate (SD1).

**SUBSTRATES:**

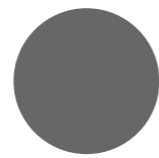
Stoneware and ceramics



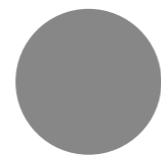
Metal



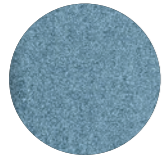
White



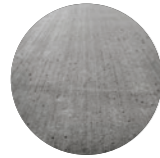
Gray



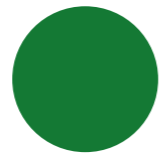
Light Gray



Bitumen felt



Concrete



Green



Red

**AVAILABLE COLOURS:**

TECHNICAL PARAMETERS	
Consumption (vertical surfaces)	350-400g/m <sup>2</sup>
Consumption (levelling grouts)	300 g/m <sup>2</sup>
Application temperature	0°C - +45°C
Temperature resistance	-30°C - +80°C
Rain resistance [time]	20°C = 2h 0°C = 4h
Water vapor permeability	SD 1
Resistance to load and pedestrian traffic	P4

LOGISTIC DATA	
Package size	Packages on the pallet
5 kg	120
10 kg	48
20 kg	36

**MATIZOL CORNER TAPE PP-BUTYL**

Self-adhesive tape, based on butyl covered with non-woven fabric, for sealing corners and details on roofs, in Matizol liquid waterproofing systems. Self-adhesive side protected with peelable foil.

TECHNICAL PARAMETERS		LOGISTIC DATA	
Foil type:	100% polypropylene	Roll size:	80mm x 10m
Mixture type:	Butyl rubber	Pieces per box:	1
Application temperature:	+5°C - +40°C	Cartons on a pallet:	588
tape weight:	50 g/m <sup>2</sup>		

**MATIZOL COLLAR PP-BUTYL**

Self-adhesive square collar based on butyl covered with non-woven fabric, for sealing penetrations through waterproofing, e.g. ventilation chimneys, covers, installations. Self-adhesive side protected with peelable foil.

TECHNICAL PARAMETERS		LOGISTIC DATA	
Foil type:	100% polypropylene	Pad size:	320mm x 320mm
Mixture type:	Butyl rubber	Pieces per box:	25
Application temperature:	+5°C - +40°C	Cartons on a pallet:	84
Pad weight:	50 g/m <sup>2</sup>		

**MATIZOL JOINT TAPE PV-ELAST**

Highly flexible tape for securing expansion joints. The centre is made of thermoplastic elastomer (5 cm wide) and reinforced with polyester mesh over the entire width.

TECHNICAL PARAMETERS		LOGISTIC DATA	
Type of non-woven fabric:	polyester mesh	Roll size:	100mm x 50m
Filling type:	elastomer	Pieces per box:	1
Temperature resistance:	-30°C - +90°C	Cartons on a pallet:	100
Roll weight:	31 g/m <sup>2</sup>		

**MATIZOL MAT PP 90G/M<sup>2</sup>**

Reinforcing mat made of polypropylene non-woven fabric dedicated to the ELITE TECH and ELITE DECK systems. The non-woven fabric embeds easily and adapts to all surfaces. It is resistant to root growth and rotting. Thanks to high permeability, it fits perfectly with the ELITE TECH and ELITE DECK membranes.

TECHNICAL PARAMETERS		LOGISTIC DATA	
Fabric:	polypropylene	Roll size:	0,8 m x 50m
Mat weight:	90 g/m <sup>2</sup>	Rolls on a pallet:	42



**TERRACES  
AND BALCONIES**

## MATIZOL ELITE DECK SYSTEM

FOR USABLE SURFACES EXPOSED TO HIGH TRAFFIC AND LOADS



APPLICATION  
FROM 0°C TO +45°C



APPLICATION ON  
WET SUBSTRATE



HIGHEST TRAFFIC  
RESISTANCE

### RECOMMENDED UNDER CONDITIONS:

- Application from 0°C to +45°C
- Obtaining an anti-slip surface
- Damp substrate or moisture under the substrate
- Unseasoned concrete
- High and frequent pedestrian and/or vehicular traffic
- Risk of water stagnation



**1** MATIZOL CORNER  
PP-BUTYL TAPE



**2** MATIZOL  
ELITE TIXO



**3** MATIZOL  
ELITE TECH



**4** MATIZOL MAT  
PP 90G /M<sup>2</sup>







**5** MATIZOL  
ELITE DECK



## MATIZOL ELITE DECK

ANTI-SLIP FINISHING LAYER FOR TERRACES AND BALCONIES



-  **15 YEARS** DURABILITY
-  **0-45°C** APPLICATION FROM 0°C TO +45°C
-  APPLICATION ON WET SUBSTRATE
-  **P4** HIGHEST RESISTANCE TO TRAFFIC

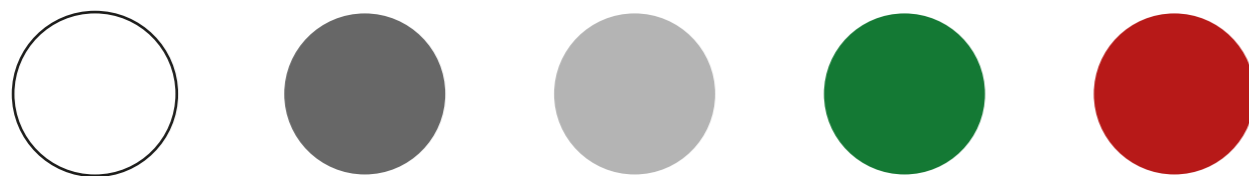
**DESCRIPTION:** Hybrid, enriched with quartz sand, waterproof finishing membrane for terraces and balconies. ELITE DECK is the top layer of the ELITE TECH system in case of need to obtain an anti-slip surface finish. Thanks to the unique combination of resins, the coating can be used intensively (P4) and applied at temperatures from 0°C to +45°C, on wet substrates, without the use of a primer. In addition, it is highly vapor permeable (SD1), which allows it to remove moisture trapped in the substrate.

**SUBSTRATES:**



Wood      Metal      Bitumen felt      Concrete

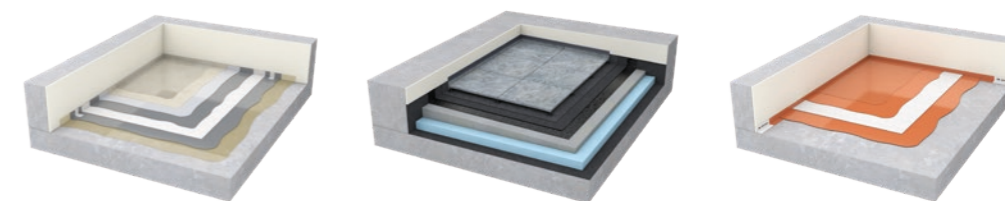
**AVAILABLE COLOURS:**



White      Gray      Light grey      Green      Red

## TERRACE FINISHING & WATERPROOFING METHODS COMPARISON

AREA OF 10 m<sup>2</sup> TERRACE WITH CONCRETE SCREED



	PMMA	VENTILATED TERRACE	MATIZOL ELITE DECK
<b>NUMBER OF APPLICATION STEPS</b>	<b>8 STEPS</b> PRIMER, DETAILS, 1ST LAYER, REINFORCEMENT, 2nd LAYER, ADHESIVE LAYER, SAND, FINISHING LAYER	<b>7 STEPS</b> PRIMER, 1ST LAYER, 2TH LAYER, SUPPORTS, TILES, GROUT, STRIPS	<b>5 STEPS</b> DETAILS, 1 LAYER, REINFORCEMENT, 2nd LAYER, anti slip coating
<b>AMOUNT OF PRODUCTS IN THE SYSTEM</b>	<b>7 PRODUCTS</b> PRIMER, MEMBRANE, SAND, 2 X NON-WOVEN FABRIC, ADHESIVE LAYER, UV PROTECTIVE LAYER	<b>7 PRODUCTS</b> PRIMER, BASE MEMBRANE, TOP-COVER MEMBRANE, SUPPORTS, ADHESIVE, TILES, STRIPS	<b>5 PRODUCTS</b> TAPES, ELITE TECH, ELITE TIXO, NONWOVEN FABRIC, ELITE DECK
<b>APPLICATION DIFFICULTY</b>	<b>VERY HARD</b> MANY STEPS, NEEDED SKILLS (quick drying) BASIC TOOLS	<b>HARD</b> WATERPROOFING + TILES, ADDITIONAL TOOLS	<b>MEDIUM</b> BASIC SKILLS AND TOOLS
<b>APPLICATION ON FRESH CONCRETE</b>	<b>NO</b>	<b>NO</b>	<b>YES</b>
<b>TOTAL TIME APPLICATION (20°C, 10m<sup>2</sup>)</b>	<b>1 DAY</b> DRYING & WORK TIME	<b>3-4 DAYS</b> DRYING & WORK TIME	<b>2-3 DAYS</b> DRYING & WORK TIME
<b>TRAFFIC RESISTANCE</b>	<b>HIGH</b>	<b>HIGH</b>	<b>HIGH</b>

TECHNICAL PARAMETERS		LOGISTIC DATA	
Consumption (finishing layer)	300 g/m <sup>2</sup>	Package size	Quantity on the pallet
Application temperature	0°C - +45°C	5 kg	120
Temperature resistance	-30°C - +80°C	10 kg	48
Rain resistance [time]	20°C = 2h 0°C = 4h		
Water vapor transmission (Sd)	SD 1		
Resistance to loads and traffic	P4		

## MATIZOL TRANS DECK SYSTEM

RESISTANT TO TRAFFIC AND LOAD, TRANSPARENT COATING FOR TERRACES AND BALCONIES



ONLY 1 LAYER,  
WITHOUT PRIMING



PRESERVES  
THE SUBSTRATES  
APPEARANCE



RESISTANT TO TRAFFIC  
AND LOADS

### RECOMMENDED UNDER CONDITIONS:

- Tiles renovation in case waterproofing problems
- Preserving the appearance of the terrace or balcony finish
- Quick tiles renovation without their replacement
- Waterproof coating on concrete screed



1

AQUA PROTECT  
ADHESIVE- SEALANT



2

MATIZOL  
TRANS DECK



## MATIZOL TRANS DECK

### TRANSPARENT COATING FOR RENOVATION OF TERRACES AND BALCONIES



ONLY 1 LAYER, NO PRIMER



PRESERVES THE SUBSTRATE APPEARANCE

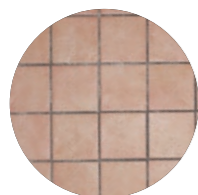


RESISTANT TO TRAFFIC AND LOAD

#### DESCRIPTION:

A transparent, self-leveling waterproofing membrane intended for the renovation of tiled terraces while preserving their natural appearance. The coating is very durable, resistant to heavy foot traffic and puncture (P3). Additionally, it does not turn yellow under the influence of UV radiation and can be applied in one layer without the need to use a primer.

#### SUBSTRATES:



Stoneware  
and ceramics



Stone



Concrete

#### TECHNICAL PARAMETERS

Consumption:	Logistic Data
Application temperature:	5°C - +35°C
Temperature resistance:	-30°C - +80°C
Usability (20°C):	72h
Water resistance (UNI EN 1928:2002):	2 bar

#### LOGISTIC DATA

Package size	Quantity on the pallet
5 kg	120
10 kg	48



## MATIZOL COLOR DECK SYSTEM

ANTI-SLIP AND WATERPROOF BALCONY FINISH



ANTI-SLIP



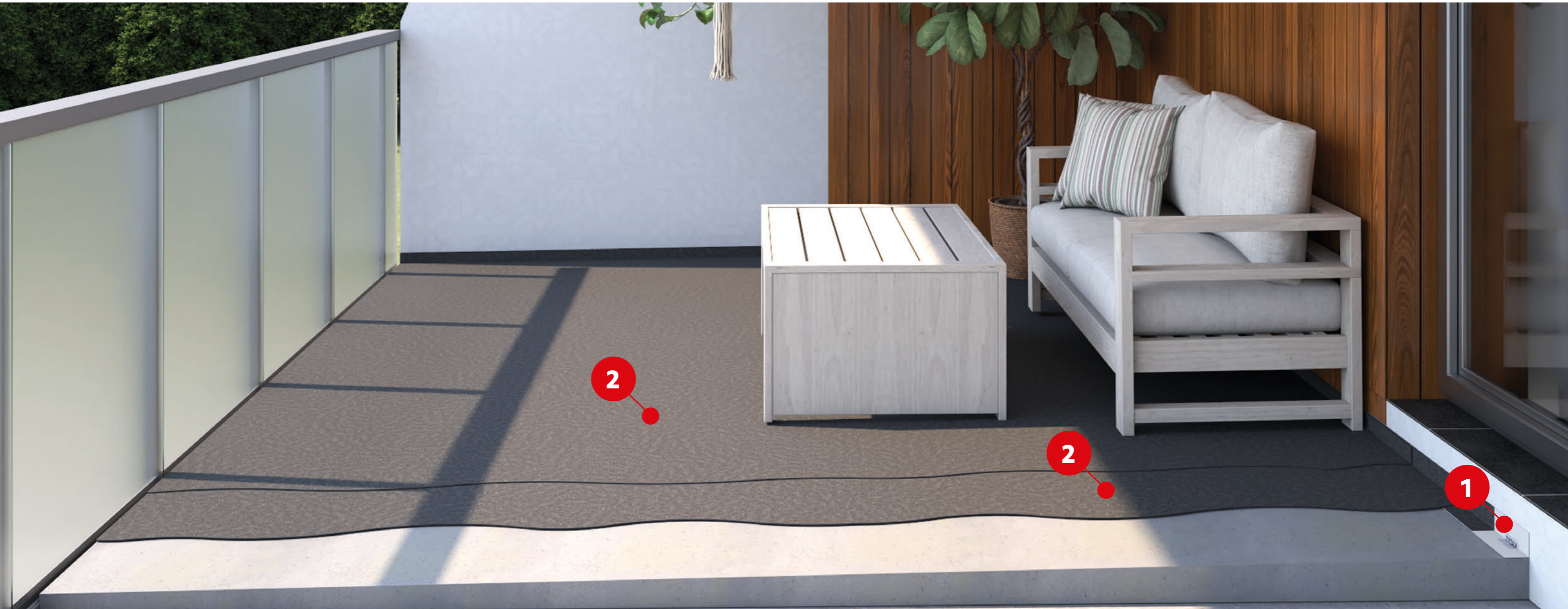
WATERPROOF



ONLY 2 LAYERS,  
NO PRIMER

### RECOMMENDED UNDER CONDITIONS

- Tiles renovation in case waterproofing problems
- Giving your terrace or balcony a new look
- Quick tiles renovation without their replacement
- Waterproof finishing coating on screed



1

MATIZOL CORNER  
PP-BUTYL TAPE



2

MATIZOL  
COLOR DECK





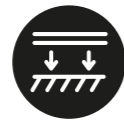
## MATIZOL COLOR DECK ANTI-SLIP COATING FOR BALCONIES AND TERRACES



ANTI-SLIP



WATERPROOF



ONLY 2 LAYERS, NO PRIMER

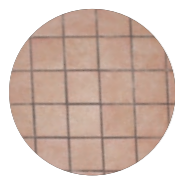
### DESCRIPTION:

Elastomeric liquid waterproofing coating, enriched with quartz sand, which creates an anti-slip surface. The coating is intended for protecting balconies and terraces. The substrate must have a sufficient slope to prevent water ponding.

### SUBSTRATES:



Concrete



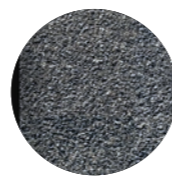
Stoneware and ceramics



Stone

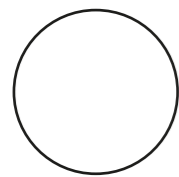


Wood

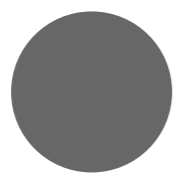


Bitumen felt

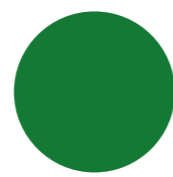
### AVAILABLE COLOURS:



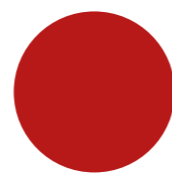
White



Gray



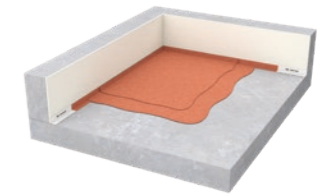
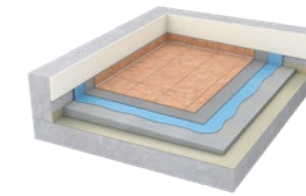
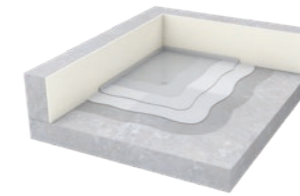
Green



Red

## COMPARISON OF WATERPROOFING & FINISHING METHODS FOR BALCONIES

AREA OF 5 M<sup>2</sup> CONCRETE SCREED



	POLYURETHANE COATING	CERAMIC TILES	MATIZOL COLOR DECK
NUMBER OF APPLICATION STEPS	<b>6 STEPS</b> DETAILS, PRIMER, 1ST LAYER, 2ND LAYER, SAND, TOP LAYER	<b>6 STEPS</b> DETAILS, PRIMER, 1ST LAYER, 2nd LAYER, TILE ADHESIVE, TILES, GROUTS	<b>3 STEPS</b> DETAILS, 1 LAYER, 2 LAYER
AMOUNT OF PRODUCTS IN THE SYSTEM	<b>5 PRODUCTS</b> SEALANT, PRIMER, SAND, MEMBRANE, UV PROTECTIVE LAYER	<b>6 PRODUCTS</b> TAPES, MINERAL WATERPROOFING, TILE ADHESIVE, TILES, GROUTS	<b>2 PRODUCTS</b> TAPES, MEMBRANE
APPLICATION DIFFICULTY	<b>MEDIUM</b> MANY STEPS, NEEDED SKILLS, BASIC TOOLS	<b>HARD</b> WATERPROOFING + TILES, ADDITIONAL TOOLS	<b>EASY</b> BASIC SKILLS AND TOOLS
TOTAL TIME APPLICATION (20°C, 5m <sup>2</sup> )	<b>3-4 DAYS</b> DRYING TIME + WORK	<b>3-4 DAYS</b> DRYING TIME + WORK	<b>1 DAY</b> DRYING TIME + WORK
RESISTANCE TO MOVEMENT	<b>MODERATE</b>	<b>VERY GOOD</b>	<b>MODERATE</b>

TECHNICAL PARAMETERSE		LOGISTIC DATA	
Consumption (for 2 layers)	1,6 kg/m <sup>2</sup>	Package size	Quantity on the pallet
Application temperature	5°C - +35°C	5 kg	120
Dry to the touch	up to 12h	10 kg	48

## MATIZOL COLOR ROOF SYSTEM

RENOVATION COATING FOR PITCHED ROOFS



UV RESISTANT



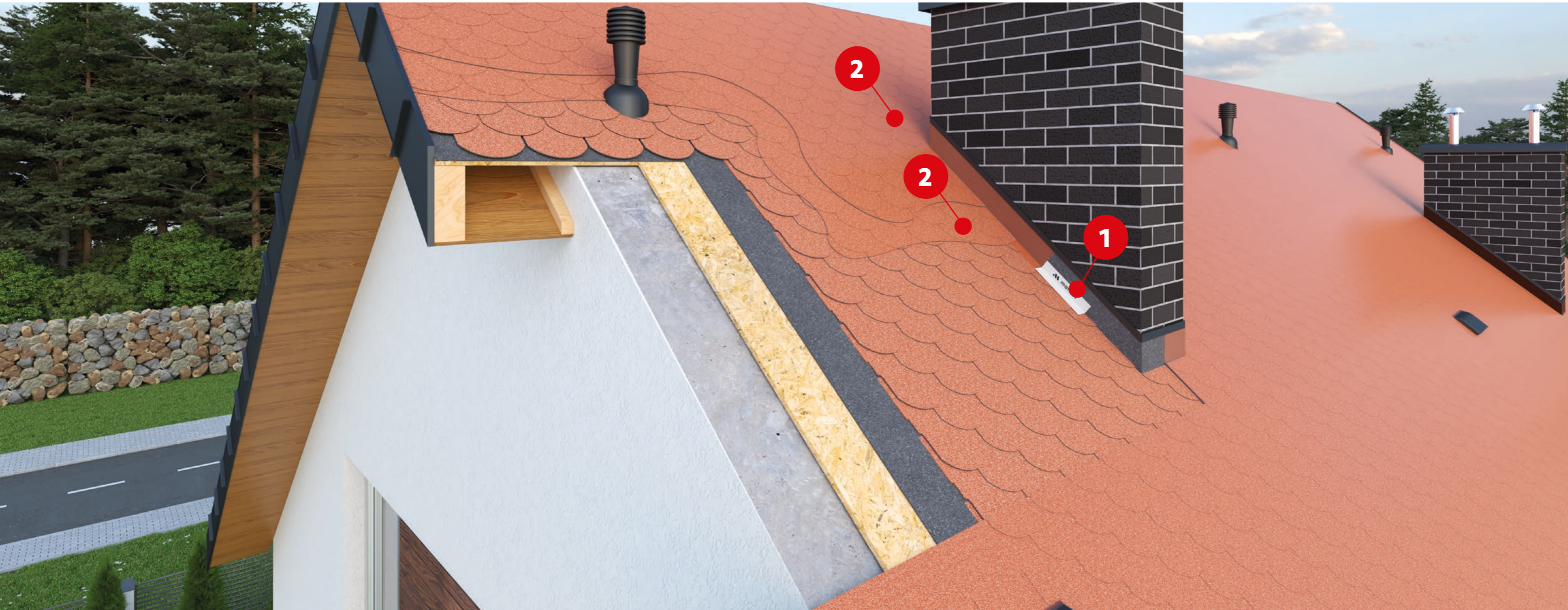
WATERPROOF



ONLY 2 LAYERS, WITHOUT PRIMING

### RECOMMENDED UNDER CONDITIONS:

- Renovation of pitched roofs
- Waterproofing recovery
- Quick waterproofing without many steps



1

MATIZOL CORNER  
PP-BUTYL TAPE

3

MATIZOL  
COLOR ROOF



## MATIZOL COLOR ROOF

### RENOVATION COATING FOR PITCHED ROOFS



UV RESISTANT



WATERPROOF

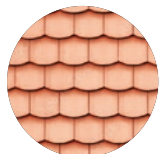


ONLY 2 LAYERS, NO PRIMER

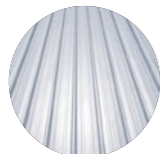
#### DESCRIPTION:

Flexible, liquid waterproofing coating, intended for surfaces with a slope (pitched roofs, balconies and terraces) not exposed to ponding water.

#### SUBSTRATES:



Ceramics



Coated Metal



Bitumen shingles

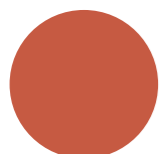


Concrete



Wood

#### AVAILABLE COLOURS:



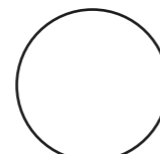
Terracotta



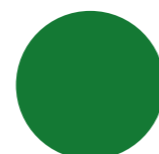
Red



Gray



White



Green

#### TECHNICAL PARAMETERS

Consumption (for 2 layers)	0,7 - 1 kg/m <sup>2</sup>
Application temperature	5°C - +35°C
Dry to the touch	up to 12h

#### LOGISTIC DATA

Package size	Quantity on the pallet
10 kg	48





# **FOUNDATIONS WATERPROOFING**



## MATIZOL EVOMER 1K RESIST SYSTEM

### HIGHLY RESISTANT AND FLEXIBLE COATING FOR HEAVY TYPE WATERPROOFING



ONLY 1 LAYER, NO PRIMER



HIGH FLEXIBILITY



HIGH MECHANICAL RESISTANCE

#### DESCRIPTION:

Liquid coating based on elastomeric resins for heavy type waterproofing of foundations and as a water and vapor barrier for sealing under the floor. The unique formula allows application without priming, in one layer. At the same time, it provides very high resistance to punctures and mechanical damage, and therefore does not need to be additionally protected by protective elements.

#### TECHNICAL PARAMETERS

Wear:	2,8 -3,3 kg/m <sup>2</sup>
Application temperature:	+5°C - +35°C
Drying time:	24h
Water resistance (UNI EN 1928:2002):	≥ 60 kPa
Adhesion to concrete (ASTM D903):	ok. 1.62 MPa

#### LOGISTIC DATA

Package size	Quantity on the pallet
20 kg	36

1

MATIZOL PRO  
FOUNDATION  
PV S3,5 F/F



2

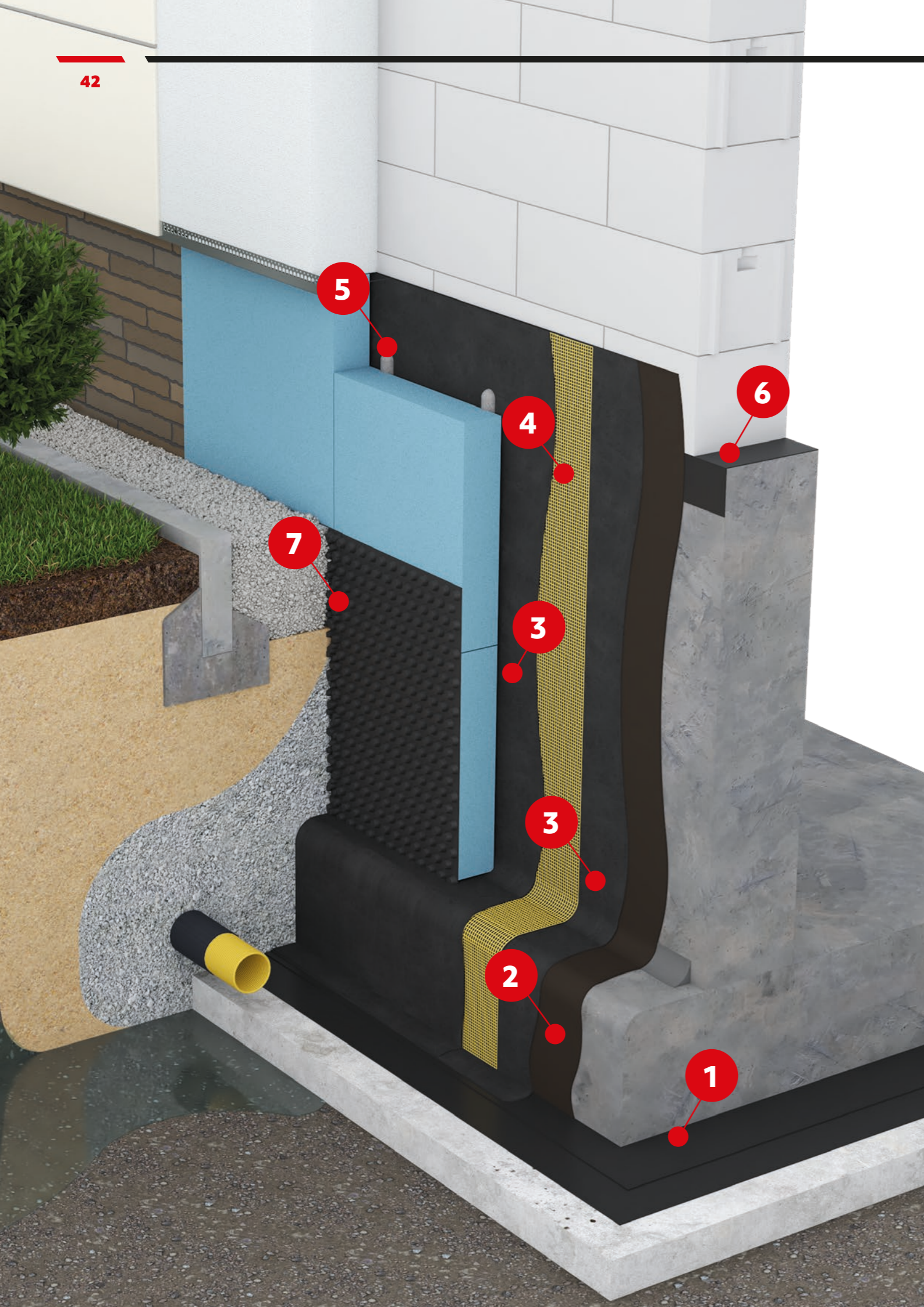
MATIZOL  
INSULATION FOIL



3

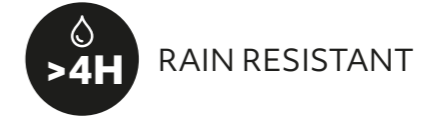
MATIZOL  
EVOMER 1K RESIST





## MATIZOL EVOMER 2K SYSTEM

TWO-COMPONENT, THICK-LAYER COATING FOR HEAVY TYPE WATERPROOFING OF FOUNDATIONS (TYPE PMBC)



### DESCRIPTION:

Waterproof bitumen mass reinforced with polymers (PMBC type) intended for making thick-layer, seamless waterproofing of foundations. Can be used on a damp surface. The coating is highly resistant to aging and permanently elastic, even at negative temperatures.

TECHNICAL PARAMETERS		LOGISTIC DATA	
Consumption:	4,2 - 5,5 kg/m <sup>2</sup>	Package size	Quantity on the pallet
Application temperature:	+5°C - +35°C.	30 kg	18
Drying time of 1 layer:	4 hours		
Time to fill the trench:	Minimum 2 days		

**1** MATIZOL PRO FOUNDATION PV S3,5 F/F



**2** MATIZOL EVOMER PRIMER



**3** MATIZOL EVOMER 2K



**4** TYTAN PROFESSIONAL 4GLASS FIBER MESH



**5** TYTAN PROFESSIONAL ADHESIVE FOR XPS BOARDS



**6** MATIZOL INSULATION FOIL



**7** MATIZOL DIMPLED FOIL



## MATIZOL EVOMER 1K SYSTEM

### ONE-COMPONENT, THICK-LAYER COATING FOR FOUNDATIONS WATERPROOFING OF (TYPE PMBC)



ONE-COMPONENT MASS



CRACK BRIDGING UP TO 5 MM



CONSUMPTION: 4.8 – 6.0 KG/M<sup>2</sup>

#### DESCRIPTION:

Waterproof bitumen mass reinforced with rubber, intended for making seamless coatings for waterproofing foundations and bonding polystyrene boards. It can be used on a damp surface.

#### TECHNICAL PARAMETERS

Consumption:	1,2 kg/m <sup>2</sup> /layer
Application temperature:	+5°C - +35°C
Next layer application:	after 5-6 h
Full curing time (+23°C/ 60% RH):	1 mm= 2 days

#### LOGISTIC DATA

Package size	Quantity on the pallet
9 kg	44
18 kg	33

1

MATIZOL PRO  
FOUNDATION  
PV S3,5 F/F



2

MATIZOL  
EVOMER PRIMER



3

MATIZOL  
EVOMER 1K



4

TYTAN PROFESSIONAL  
ADHESIVE FOR XPS  
BOARDS



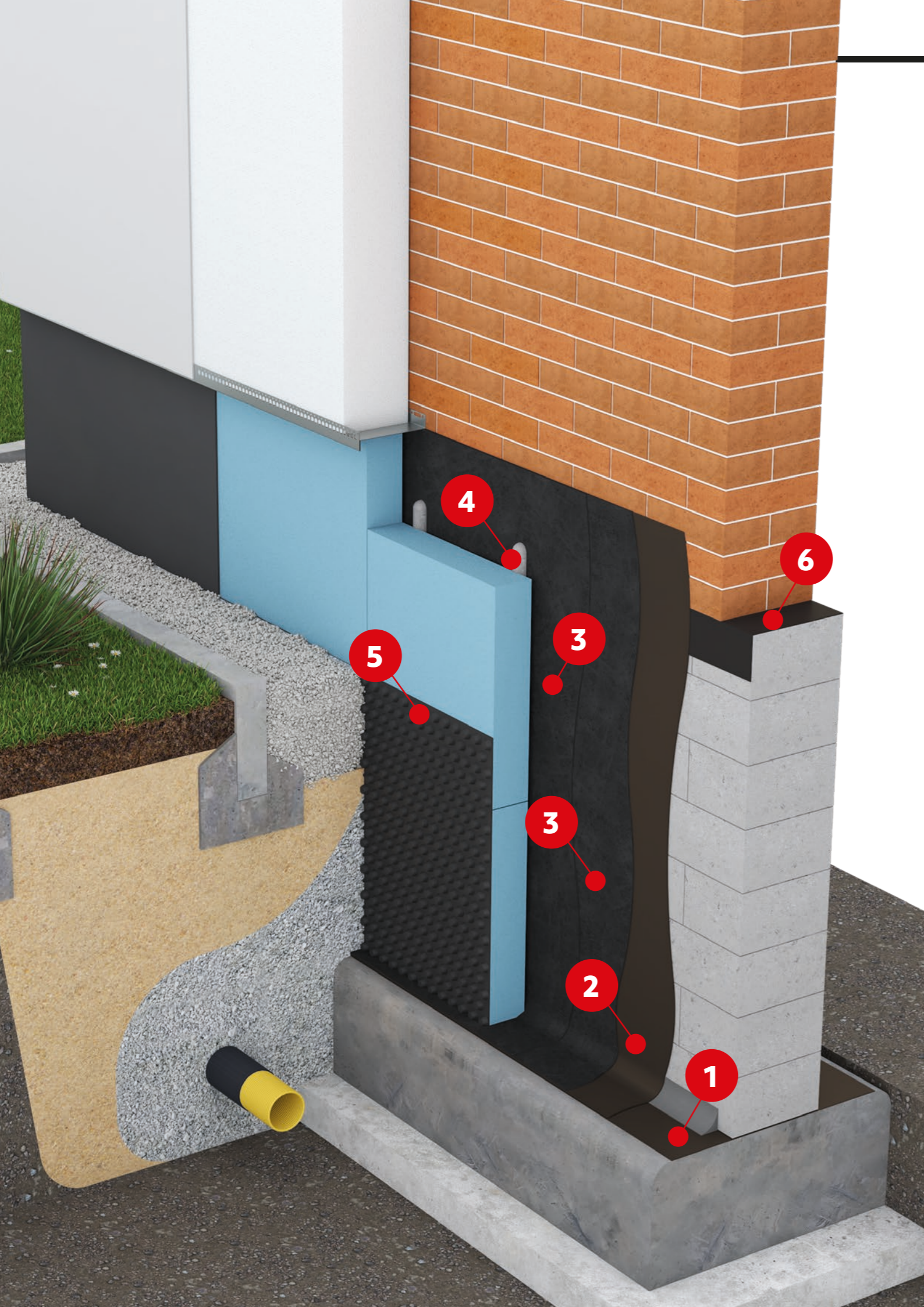
5

MATIZOL  
DIMPLED FOIL



6

MATIZOL  
INSULATION FOIL



# ROOF & FOUNDATION WATERPROOFING

## MATIZOL EVOMER FAST PRIMER PRIMER UNDER BITUMEN FELTS & COATINGS ON ROOFS AND FOUNDATIONS



QUICK-DRYING

DILUTION  
POSSIBILITYSAFE FOR  
EPS & XPS

Quick-drying polymer-bituminous primer for preparing the substrate under bitumen felts and coatings and for moisture protection of concrete elements and small steel elements.

### TECHNICAL PARAMETERS

Consumption:	up to 0.2 kg/m <sup>2</sup>
Application temperature:	+5°C - +35°C
Drying time:	+20°C = 20 min +5°C = 60 min

### LOGISTIC DATA

Package size	Number of pails on a pallet
9 kg	44
18 kg	33

## MATIZOL EVOMER FAST FIX ADHESIVE AND REPAIR COMPOUND FOR ROOFS AND FOUNDATIONS

PERMANENTLY  
ELASTIC

UV RESISTANCE

SAFE FOR  
EPS & XPS

Dense, permanently elastic and quick-drying putty for filling cracks and defects in bitumen, mineral and metal substrates.

### TECHNICAL PARAMETERS

Consumption (1mm layer):	1,2 kg/m <sup>2</sup>
Application temperature:	+5°C - +35°C
Rain Resistance:	2-4 hours

### LOGISTIC DATA

Package size	Number of pails on a pallet
1 kg	324
5 kg	76

## MATIZOL EVOMER FAST COATING WATERPROOF COATING FOR FOUNDATIONS AND ROOFS



QUICK-DRYING



UV RESISTANCE

SAFE FOR  
EPS & XPS

A quick-drying, waterproof polymer-bitumen mass that creates a durable, seamless and flexible coating, resistant to UV. Safe for polystyrene boards.

### TECHNICAL PARAMETERS

Consumption (2 layers):	up to 0.7 kg/m <sup>2</sup>
Application temperature:	+5°C - +35°C
Drying time:	+20°C = 2h

### LOGISTIC DATA

Package size	Number of pails on a pallet
9 kg	44
18 kg	33





**matizol**  
PROOFED BY EXPERIENCE

Selena FM SA  
Legnicka St. 48A, 54-202 Wrocław, Poland  
[www.matizol.com](http://www.matizol.com)  
e-mail: [info.sit@selena.com](mailto:info.sit@selena.com)